



Duxbury  
Bay  
Maritime  
School

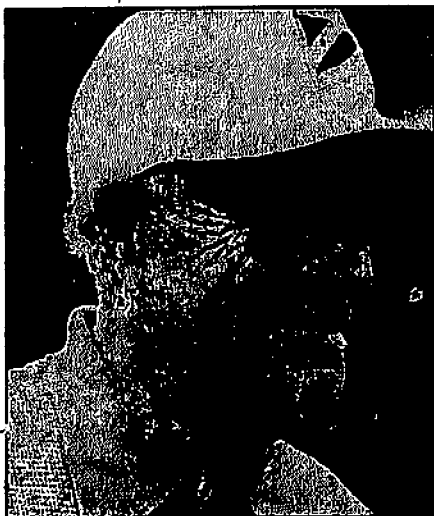
# Bay Tidings

*Establishing a bond between town residents and the waterfront*

Volume 1, Issue 3

Newsletter of the Duxbury Bay Maritime School on the William P. Ellison Campus

Fall 1998



## BILL ELLISON: THE GIVING MAN

Residents who moved to Duxbury within the last decade have come to know the Ellison name as a kind of town icon appearing on the front of the high school, the art center, and, this year, the campus of the new Duxbury Bay Maritime School.

Missing from this now institutionalized name, Ellison, is the humanity of one of the town's most giving families, and specifically the man whose name graces our waterfront campus - William Partridge Ellison.

He was known as Bill, of course, and he really was known. Behind the lofty name, Ellison, was a man who loved and gave of himself to the people and the town he lived in. And after he died tragically in a fire on the night of October 17, 1988, at age 84, those who were privileged to have known Bill all had the same thought: "Here was a man who lived life to the fullest."

The irony of Bill's death may be that he gave countless financial support to families who themselves were victimized by fire, according to fire chief Carl O'Neil, who was interviewed at the time.

Paul Barber, who was chair of the selectmen at the time and a Powder Point neighbor of Bill's, remembered him as a man who never wanted recognition for all the contributions he made to his townspeople. "No one will ever know all he did," said Barber, "because he'd never say anything about it. What he enjoyed was being able to help, but he never wanted notoriety for it."

Indeed, countless stories are told of people, down on their luck, who received anonymous gifts up to several thousands of dollars to help them over the rough spots in their lives. Few ever knew the benefactor to have been Bill Ellison, whose lifelong devotion to children helped create the great success of the Boys and Girls Camps, Inc. of Boston.

Those who knew Bill recognize how fitting the Ellison Foundation support for DBMS is, given Bill's lifelong love of Duxbury Bay, of sailing and boating in his famous high-powered sport runabout, "Black Duck."

Bill was a descendant of one of Duxbury's original settlers. Born in Newton, he graduated from Phillips Academy in Andover in 1923, and from Harvard in 1927. At Harvard he was a three varsity sport standout in football, baseball, and hockey. As a senior he was captain of the football and hockey teams.

After college Bill began work in the family business - Elkland Leather Co. - and became president of the Proctor Ellison Company of Boston, which his father and a partner founded as a tanning business in the 1920's.

His love of sports broadened into golf, fishing, and sailing, the last of which he often did on Duxbury Bay, frequently racing in yacht club regattas. He also developed a love for fast motorboats, and in 1942, at the age of 38, Bill enlisted in the Navy. As a lieutenant commander he was skipper of a destroyer escort during World War II.

After the war, during his long, productive life with summers spent in Duxbury, Bill's involvement in both his immediate community and the broader life of Boston became apparent. Among his many causes were the Boys and Girls Camps, Inc. of Boston, USS Constitution Museum, the New England Aquarium, and Northeastern University. He was also a member of the Harvard Club and the Anglers Club of Key Largo, Florida.

He may be gone now, but as the sails hardened and the bow waves began to churn for nearly 500 Duxbury children last summer, the presence of Bill Ellison was still as strong on the bay as ever.

## NEW DIRECTOR TAKES THE HELM

Ned Lawson, a lifelong sailor and one of the original directors of Duxbury Bay Maritime School has become the new leader of DBMS, taking over for Mike Horn, who led the school to an initial season described as "amazingly successful" by president Sherm Hoyt.

"Mike did such a terrific job," Hoyt said, "we never expected to be this far along in the first year." Under Horn, DBMS established its office at the William P. Ellison waterfront campus, and put nearly 500 Duxbury children into boats, 90-percent of them for the first time. He oversaw a staff of 22

*(Continued on page 3)*



Duxbury  
Bay  
Maritime  
School

## Inside

- DBMS Summer Sailing programs
- DBMS Racing Team Update
- The Guzzle



## DBMS Lines

### *DBMS Sailors Excel at Mid-Summer Regatta*

DBMS entered only a few sailors in Duxbury Yacht Club's Mid-Summer Junior Regatta (August 6-7), but they came away laden down with trophies.

Sailing in the Optimist Green Fleet, restricted to those competing for the very first time, the three DBMS entrants placed first, second, and third. **Hans Jensen** was nearly perfect in six races with four firsts, a second, and a third. **Matt Johnson** was close behind in second, while **Dennis Gunderson** finished third.

The School entered two boats in the 420 fleet. **Brewster Charles** and **Alden Reid**, who have had considerable racing experience in other classes of boat, challenged for the lead throughout the series, but ended up second overall behind **DYC's Alex Munnell**. Brothers **Brian** and **Jim Dinneen**, competing in their first regatta, improved during the series, placing fifth and sixth in the final two races and finishing eleventh overall.

### *Students Sail Victoria*

Twelve older students were selected by the DBMS instruction staff to sail aboard **David** and **Pat Lowry's** handsome ketch **Victoria**, berthed at our pier, on Sunday, July 26. Those chosen to be on board as a reward for their special efforts and achievement during the first month of the summer program were: **P.J. Biggs**, **Lindsay Charland**, **Kevin Dahlen**, **Mike Dillon**, **Tim Dillon**, **Laura Doyon**, **Dennis Gunderson**, **Sarah Hopkins**, **Mike Jacobson**, **Hans Jensen**, **Brent Meilheide**, and **Courtney Robba**.

Blessed with fine weather, the students each had turns at the helm and enjoyed a unique experience. The School thanks the Lowrys for the opportunity to expose the sailors to the larger world of sailing.

### *Adult Sailing Program Hampered By Weather*

After a series of well attended and well received shore school sessions taught by **Bill Walker** and **Skip Patton**, on-the-water instruction for adults was begun in early June. The first three days of

lessons were perfect for teaching: moderate breezes and clear weather. Unfortunately, the remainder of the two weeks allotted for the program appeared to be jinxed. It blew too hard, or it rained, or it was too foggy to sail.

Make-up lessons were then scheduled for mid-August, and, again, the weather refused to cooperate. Make-ups for the make-ups were finally completed in September.

Forty-five adults signed up for the pilot program, and the demand for adult instruction is clearly huge. The School is planning to enlist some instructors dedicated to the adult program for the next sailing season in order to meet the demand.

### *First Summer '98*

The program of junior instruction had to endure the quirks of nature: the first week of every two-week period was marked by weather problems that severely limited the time that students could be on the water. But students and staff alike coped with the problems, and the second weeks were always better, allowing every moment of available sailing time to be utilized. The effects of instruction and training became more and more evident as the summer progressed, and students in the program for a month or more showed dramatic improvement in skills.

This first season, the vast majority of the nearly 500 students enrolled in the various sessions were beginners or relatively new to the sport. It has been challenging to teach so many new sailors without the benefit of a core of continuing students who have already been through the system. In most programs, such continuing students are the leaders and examples for those just starting out. In 1999, DBMS will benefit greatly from the presence of returning sailors.

Still, it was an impressive sight when 55-60 boats were rigged and sailing in more or less orderly fashion. The red panels on the **Pram** sails made the panorama viewed from shore especially striking. It was clear that the Bay was alive with sailors.

### Board of Directors

**Donald C. Beers, Ex Officio**  
Duxbury Harbormaster

**Tony Chamberlain**  
Outdoor Sports Editor, Boston Globe

**Frederic M. Clifford**  
Principal, Clifford Associates,

**Samuel S. Dennis III, Esq., Counsel**  
Partner (Retired), Hale & Dorr, Boston

**Charles H. Fargo**  
Real Estate advisor to BankBoston

**F. Sherman Hoyt, President**  
Consultant for strategic planning

**Jackson S. Kent, Jr.**  
President, Bayside Marine Corp.

**Edward F. Lawson, Esq., Secretary**  
Attorney in environmental law

**Patricia Loring**  
Open Space Planner

**Wayne R. Ogden, Vice President**  
Principal, Duxbury Senior High School

**Kenneth S. Safe, Jr., Treasurer**  
Managing Partner, Welch & Forbes

**Gordon H. Cushing, Ex Officio**  
Director, Duxbury Rec. Dept.

### *Carolyn Whipple Wins Hoyt Award*

The Keogh Family donated a magnificent model of an Optimist Dinghy, to be known as the **F. Sherman Hoyt Trophy** and awarded annually to "the Pram or Optimist student whose energy, enthusiasm, and personal achievement set the standard" for others. The DBMS instructors considered a number of candidates and, citing her helpfulness towards others in her class and the great improvement in her own skills over the summer, selected **Carolyn Whipple** as the first recipient of the Hoyt Award.



## The Guzzle of Duxbury Bay

### What "the Guzzle" was:

A century ago, the Guzzle was an inlet off the Bay on the south edge of the DBMS property with a wooden bulkhead where schooners would dock to off-load coal and lumber.

### What "the Guzzle" is:

Today, the Guzzle is a decrepit remnant. The bulkhead long ago collapsed, and the stone and earth behind has eroded into the inlet, made worse by a crumbling concrete wall on the southeast corner. It has no use, is unsightly, and the debris of ages makes it a safety hazard.

### What "the Guzzle" could be:

Dredged below mean low water, reconfigured and environmentally

engineered, and complemented by a launching ramp and floats, the Guzzle would;

- Provide a sheltered basin for the DBMS launch and small power boats during the summer
- Allow all-tide access to the sailing waters of the Bay
- Make easier the hauling of DBMS's sailing fleet in storm emergencies, reducing the demand on the town ramp
- Extend the sailing season into the fall and spring by providing dry sailing facilities, allowing the development of high school sailing programs
- Make possible the restoration of frostbite sailing activities
- Allow the introduction of

kayaking activities

- Facilitate the hosting of special events which require launching and hauling of visiting boats
- Ensure cleaner runoff from surrounding streets through installation of an oil and grit separator.
- Promote the growth of the established saltmarsh and foster a healthier marine resource area
- Dramatically improve the appearance of the waterfront and natural surroundings at the corner of the property

The Guzzle project is vital to any and all of the water-based activities of the School. Its design, engineering, and construction will be costly, but necessary.

*(Continued from page 1, Ned Lawson)*

instructors, purchased over 70 boats, and established an adult program subscribed to by nearly 50 townspeople.

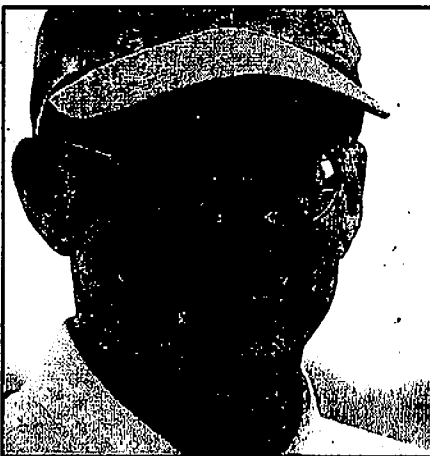
But Horn, a 30-year collegiate racing coach, expressed his desire to return to a role "closer to the water" and by mutual agreement with the board of directors, resigned his post as of October 31. He was immediately elected to the board of directors.

Lawson was chosen unanimously by the board at its September meeting, after a search committee had considered the applications of two other candidates. Given the varied challenges facing DBMS as it develops beyond its initial year, board members believe that Lawson has the widest range of experience.

"Aside from his on-water sailing and racing experience, his years as an environmental lawyer make Ned uniquely qualified to lead the school through the next stages of development of the William P. Ellison Campus," said Hoyt.

That development includes extensive modifications to "The Guzzle" - the inlet at the south end of the campus reinforcing the bulkhead and seawall, and renovating buildings into classroom and boat storage space.

*(Continued on page 4)*



*Ned Lawson New DBMS Director*

### DBMS Racing Team Debuts Successfully

Advanced 420 sailors representing DBMS in its first season enjoyed great success in competition sponsored by the Southern Massachusetts Sailing Association and by area clubs.

Participating in the SMSA "B-League" Team Race Series, DBMS won the "Off-Cape" Division. The clinching event was a round-robin series with New Bedford YC, Plymouth YC, Duxbury YC and DBMS, co-hosted by the latter two and sailed exclusively in DBMS's new boats. Sailors John Mullins, Jen Lawson, Cory Cramer, Maggie Ogden, Brewster Charles, Brian Dinneen, Lindsay Charland,

Ben Carleton, and Jim Dinneen won all six of their matches to qualify for the "B-League" Championship at Stage Harbor YC on August 19.

The Championship was sailed in strong and gusty northwest winds, requiring some adjustment in customary skipper/crew combinations. Two teams from Hyannis YC and one each from Chatham YC, Chapoquoit YC, and Quisset YC all fell prey to the DBMS sailors, who emerged undefeated with five wins and no losses to claim the League title.

Earlier, John Mullins and Jen Lawson represented DBMS in the SMSA Junior Double-Handed Championship (Nash Trophy) at Wianno YC, July 20-22, and placed seventh in a field of nineteen. The pair also teamed up in August to sail in the 133-boat fleet at the Buzzards Bay Regatta, winning one race and finishing in the top thirty.

On July 26-27, Jen Lawson switched to skippering, with Maggie Ogden crewing, in the SMSA Junior Women's Double-Handed Championship (Gill Trophy) at DYC. They ended the first day of competition well-placed, but the heavier air on the second day gave them difficulty. A pair of capsizes dropped them to seventeenth in the 23-boat fleet.

All in all, a great beginning for a 420 racing team that grew from four to a dozen sailors during the course of the summer, with prospects of even greater participation next year.

(Continued from page 3)

Leadership for this development, plus the sailing programs and overseeing fundraising efforts have widened the scope of the Executive Director's job beyond its original job description, and the board felt Lawson is eminently qualified in every phase.

Lawson has been involved with DBMS "since day one", he notes. An original member of the founding board of directors, his son, Ted, and daughter, Jen, were both instructors at the school, and eight year old daughter, Cassie, took sailing lessons at DBMS. Ned and his wife, Janet, have another daughter, Meg, who is a senior at Colby College in Waterville, Maine. The Lawsons spend summers in Duxbury, and return to their Dedham home in the fall.

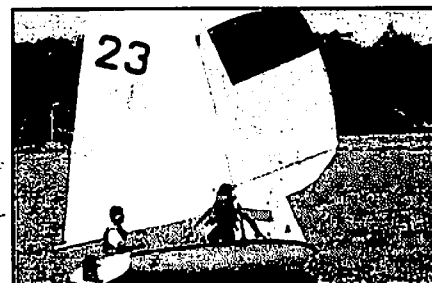
Since 1971 Lawson has practiced law, specializing in environmental law with the firm of Patrick, Willard, and Redding in Boston. After 28 years, he was ready for dramatic professional change that the DBMS directorship brings to his life. "I've been doing this (law) for 28 years," he says,

"and I found myself becoming dissatisfied, not with law itself, but with the fact that in this profession you're usually solving problems through conflict."

His long-term goals arise out of fundamental grounding established by Mike Horn, according to Wayne Ogden, a DBMS director who served on the search committee. "Mike had a vision that DBMS would become the sailing center for the South Shore - local students coming here to race the way students go to MIT on the Charles to race."

Many practical obstacles exist between the long-term goal and immediate needs for the school, and Lawson has set as a winter priority establishing a range of adult programs to complement the junior sailing.

Another immediate goal, Lawson says, is to begin work on the number of steps necessary to turn the Guzzle into a docking, staging area and boat ramp on the south side of the campus to keep the school physically separated from the boatyard which works on the north end. "There is much to do," notes Ogden, adding "the immediate issue right now is making the transition from Mike to Ned."



### Community Campaign Committee

•Tony Chamberlain •Pat Loring •Kim Cully •Sandra Witten •Kathy Gould  
•John & Louise Keogh •Chris Van Alstyne •Mary Jane O'Brien •Linda Glynn  
•Dolores Savage •Rita Strong •JoAnne Hebert •Joanne Charland •Brian Donnelly  
•Joan Sundstrom •Robert & Chris Ash •Cindy Fiorini •Toni Brennan •Steve Woodworth

### Newsletter Committee

Tony Chamberlain, Editor •Chris Conners, Photography  
Louise Keogh, MaryJane O'Brien, Denise Buckley

1 1

R007

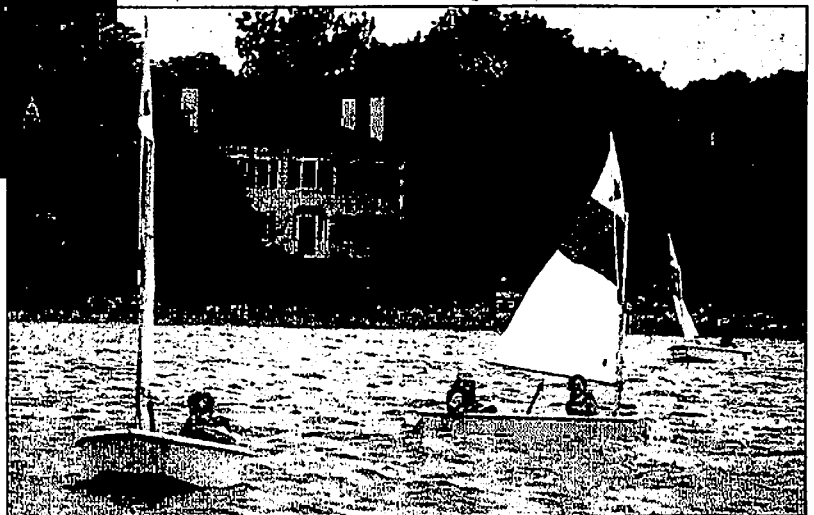
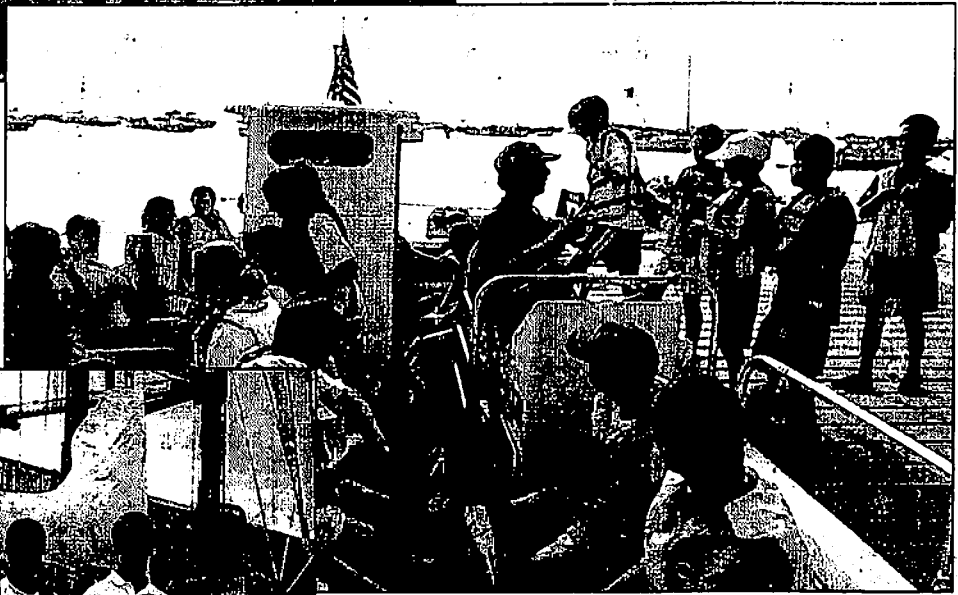
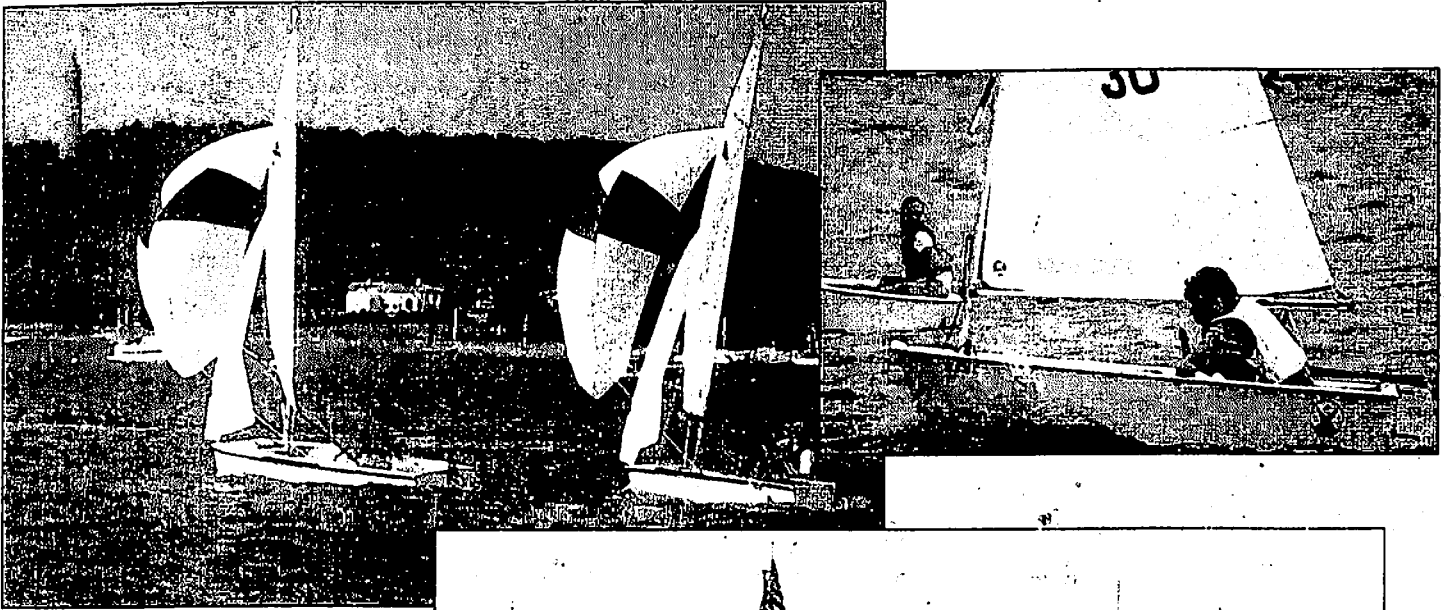
NONPROFIT ORG.  
U.S. POSTAGE  
PAID  
PERMIT NO. 17  
DUXBURY MA

MATTAKESSETT COURT  
POST OFFICE BOX 263A SHS  
DUXBURY, MASSACHUSETTS 02331

Duxbury  
Bay  
Maritime  
School



# COME SAIL THE BAY WITH DBMS



Duxbury  
Bay  
Maritime  
School

Dear Friend of DBMS:

Elsewhere in this newsletter you have read about the Duxbury Bay Maritime School's first summer season and the hundreds of junior sailors that participated in the program. You learn, also, of the extraordinary success of some of those young sailors on the race course here and elsewhere.

We had a truly outstanding staff of instructors, all of whom have said they would like to return, and many of whom said that working at DBMS was "the best job I have ever had" and that they greatly enjoyed the young sailors they taught.

This inaugural season was extremely successful. But our work is not done and strong support from the community is needed. The rehabilitation of the Guzzle, outlined elsewhere, is the next critical step in the improvement of the property. The shop, currently used by Snug Harbor Boat Works, must soon be relocated, and the open space created by the removal of the old building must be improved and made both functional and attractive. Adult sailing is a priority for next summer. We need also to plan for the construction of classroom facilities. An open tin shed is a difficult place to teach in with rain beating loudly enough on the roof to drown out instructors' voices. The full development of fall, winter, and spring courses in a wide variety of subjects hinges on the creation of suitable classrooms.

The School needs your financial support to build upon the success of 1998. A number of giving opportunities at established levels are available, but your fully tax-deductible donation in any amount is always welcome. Thank you in advance for help broadening access to the waters of Duxbury Bay.

*Herb Allen*

Please cut on dotted line and return to the Duxbury Bay Maritime School.

## Duxbury Bay Maritime School-Help Us Raise The Sail...

Please contribute and show your support for the DBMS. Thank you for your support and consideration.

Enclosed is my gift of:

\$ \_\_\_\_\_

NAME \_\_\_\_\_

ADDRESS \_\_\_\_\_

CITY \_\_\_\_\_

STATE \_\_\_\_\_

ZIP \_\_\_\_\_

TELEPHONE \_\_\_\_\_



Duxbury  
Bay  
Maritime  
School

WILLIAM P. ELLISON CAMPUS  
POST OFFICE BOX 263A SHS  
DUXBURY, MASSACHUSETTS 02331

Your gift is tax deductible to the extent provided by law. Please send your check payable to the Duxbury Bay Maritime School. Thank You!